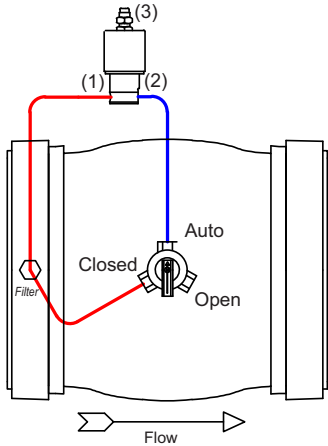
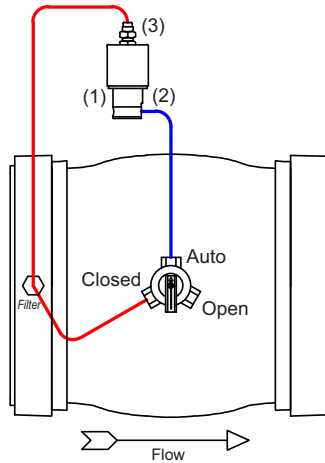


PILOT PLUMBING CHARTS

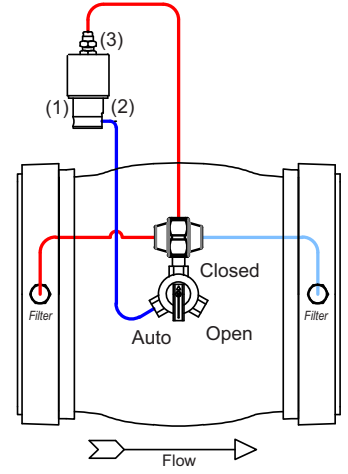
Normally Open ENERGIZED = CLOSED
 NOT ENERGIZED = OPEN
 OVER 80 PSI REQUIRES SPECIAL SOLENOID



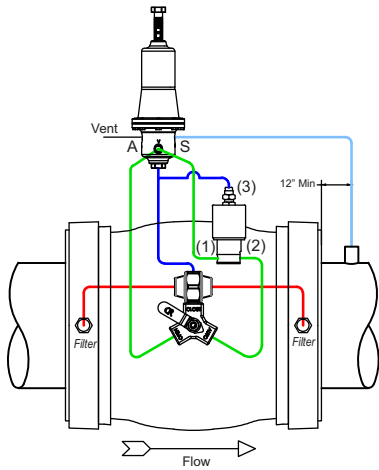
Normally Closed ENERGIZED = OPEN
 NOT ENERGIZED = CLOSED



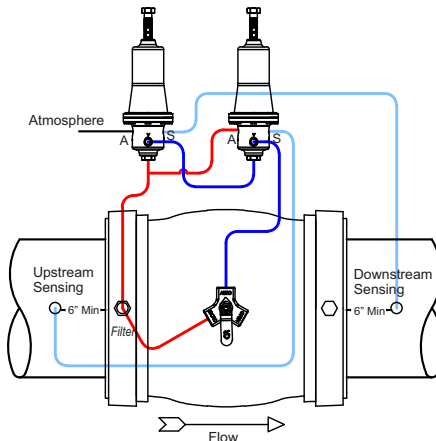
Check Valve ENERGIZED = OPEN
 NOT ENERGIZED = CHECK



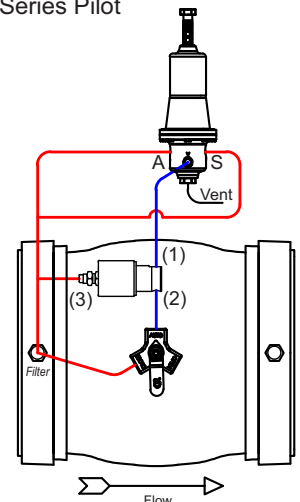
Pressure Reducing & Electric On/Off
 6000 Series Pilot and Check Valve



Pressure Sustaining/Reducing
 6000 Series Pilot



Pressure Sustaining/Electric On/Off
 6000 Series Pilot



Pressure Sustaining
 6000 Series Pilot and Check Valve

