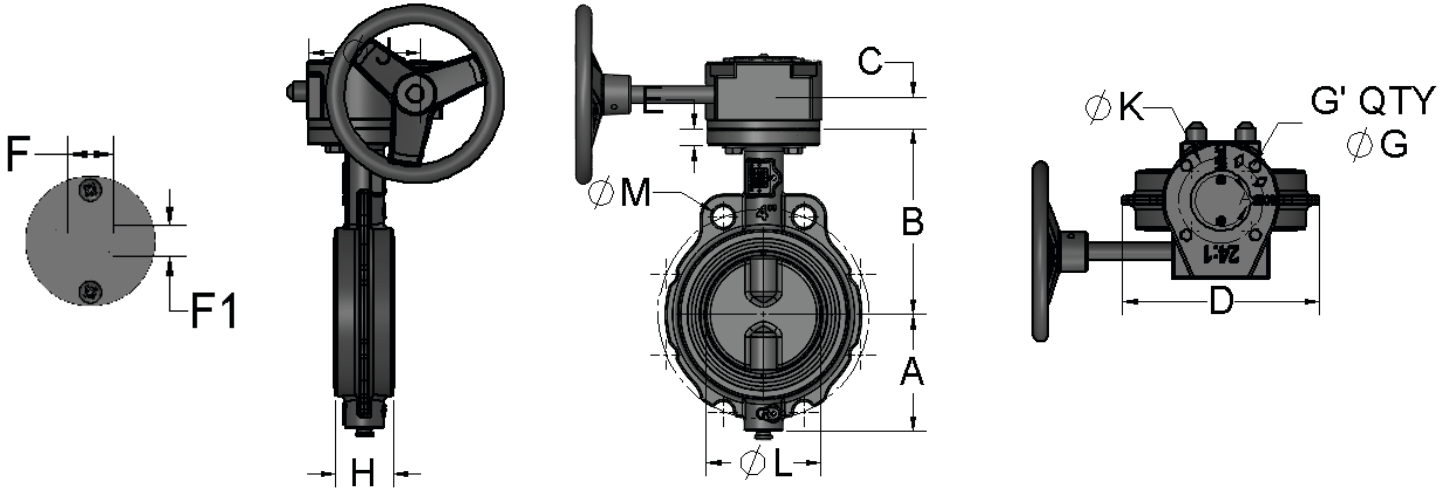


MONARCH BUTTERFLY VALVE DIMENSIONS



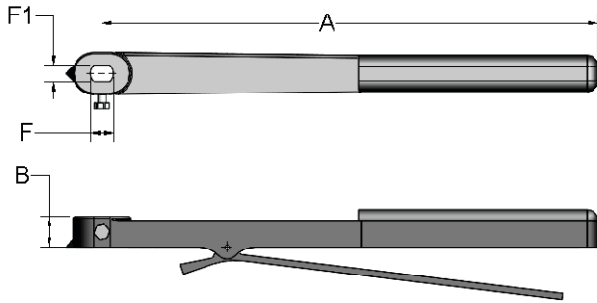
VALVE SIZE	A	B	C	D	E	F	F1	G'	G	H	J	K	L	M
3"	3.5	5.0	1.1	5.4	0.50	0.56	0.44	4	0.41	1.8	4	3	3.2	6.00
4"	4.1	6.6	1.1	6.9	0.50	0.64	0.44	4	0.41	2.1	4	3	4.2	7.50
6"	5.1	7.0	1.1	8.8	0.50	1.00	0.44	4	0.41	2.2	4	3	6.0	9.50
8"	6.4	9.6	1.6	10.9	0.68	1.13	0.75	4	0.53	2.4	6	5	8.1	11.75
10"	7.7	11.0	1.6	13.4	0.75	1.13	0.75	4	0.53	2.7	6	5	10.1	14.25
12"	9.3	12.0	1.6	16.2	0.75	1.13	0.75	4	0.53	3.0	6	5	12.1	17.00

Material Specifications Monarch Series

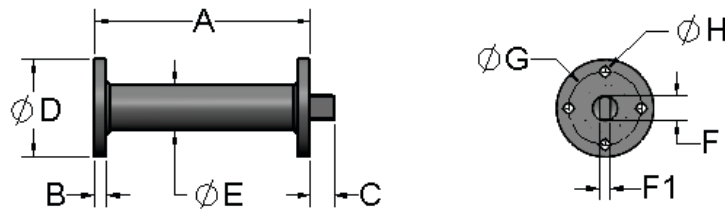
Part	Material
Body	Cast Iron
Seat	Phenolic Back Cartridge w/Buna-N Seat
Disc 2"-24"	Stainless-Steel
Disc 2"-24"	Ductile Iron
Stem Top/Bottom	Stainless-Steel
Spring Pin	Stainless-Steel
Top/Bottom Bearing	Nylon
O-Rings	Buna-N

For Monarch Series Butterfly Valves see page 60

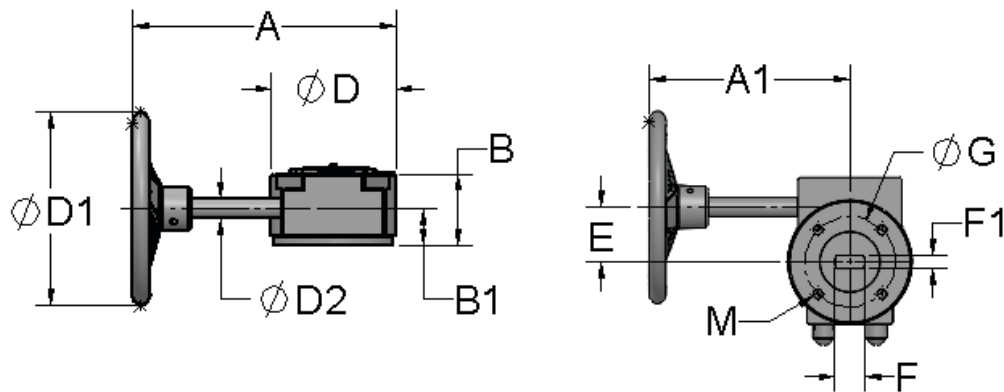
MONARCH BUTTERFLY VALVE DIMENSIONS



Valve Size	A	B	F	F1
3"-6"	11.75	1.00	0.87	0.44
8"-12"	13.75	1.15	1.13	0.75



Valve Size	Extension Length A	B	C	D	E	F	F1	G	H
2" - 6"	24,36,48,60,72	.54	1.00	4	1.88	1.00	.44	3	.41
8" - 12"	24,36,48,60,72	.75	1.50	6	2.38	1.13	.75	5	.53



Valve Size	A	A1	B	B1	D	D1	D2	E	F	F1	G	M
2"-6"	7.8	5.7	2.5	1.40	4.1	7.25	0.63	1.88	1.00	0.44	3	3/8"-16
8"-12"	11.2	8.1	3.0	1.65	6.1	11.25	0.75	3.00	1.13	0.75	5	1/2"-13