



X-GATE™ LOW HEAD CANAL GATE PARTS

FLAT BACK FRAME

Standard Sizes

SPIGOT BACK FRAME

CG8FB24	8" x 24"
CG8FB36	8" x 36"
CG8FB48	8" x 48"
CG8FB60	8" x 60"
CG8FB72	8" x 72"
CG8FB84	8" x 84"
CG8FB96	8" x 96"
CG8FB108	8" x 108"
CG8FB120	8" x 120"
CG10FB24	10" x 24"
CG10FB36	10" x 36"
CG10FB48	10" x 48"
CG10FB60	10" x 60"
CG10FB72	10" x 72"
CG10FB84	10" x 84"
CG10FB96	10" x 96"
CG10FB108	10" x 108"
CG10FB120	10" x 120"
CG12FB24	12" x 24"
CG12FB36	12" x 36"
CG12FB48	12" x 48"
CG12FB60	12" x 60"
CG12FB72	12" x 72"
CG12FB84	12" x 84"
CG12FB96	12" x 96"
CG12FB108	12" x 108"
CG12FB120	12" x 120"
CG15FB36	15" X 36"
CG15FB48	15" X 48"
CG15FB60	15" X 60"
CG15FB72	15" X 72"

CG15FB84	15" x 84"
CG15FB96	15" x 96"
CG15FB108	15" x 108"
CG15FB120	15" x 120"
CG18FB36	18" x 36"
CG18FB48	18" x 48"
CG18FB60	18" x 60"
CG18FB72	18" x 72"
CG18FB84	18" x 84"
CG18FB96	18" x 96"
CG18FB108	18" x 108"
CG18FB120	18" x 120"
CG24FB48	24" x 48"
CG24FB60	24" x 60"
CG24FB72	24" x 72"
CG24FB84	24" x 84"
CG24FB96	24" x 96"
CG24FB108	24" x 108"
CG24FB120	24" x 120"
CG30FB60	30" x 60"
CG30FB72	30" x 72"
CG30FB84	30" x 84"
CG30FB96	30" x 96"
CG30FB108	30" x 108"
CG30FB120	30" x 120"
CG36FB 72	36" x 72"
CG36FB84	36" x 84"
CG36FB96	36" x 96"
CG36FB108	36" x 108"
CG36FB120	36" x 120"

CG8SB24	8" x 24"
CG8SB36	8" x 36"
CG8SB48	8" x 48"
CG8SB60	8" x 60"
CG8SB72	8" x 72"
CG8SB84	8" x 84"
CG8SB96	8" x 96"
CG8SB108	8" x 108"
CG8SB120	8" x 120"
CG10SB24	10" x 24"
CG10SB36	10" x 36"
CG10SB48	10" x 48"
CG10SB60	10" x 60"
CG10SB72	10" x 72"
CG10SB84	10" x 84"
CG10SB96	10" x 96"
CG10SB108	10" x 108"
CG10SB120	10" x 120"
CG12SB24	12" x 24"
CG12SB36	12" x 36"
CG12SB48	12" x 48"
CG12SB60	12" x 60"
CG12SB72	12" x 72"
CG12SB84	12" x 84"
CG12SB96	12" x 96"
CG12SB108	12" x 108"
CG12SB120	12" x 120"
CG15SB36	15" X 36"
CG15SB48	15" X 48"
CG15SB60	15" X 60"
CG15SB72	15" X 72"

CG15SB84	15" x 84"
CG15SB96	15" x 96"
CG15SB108	15" x 108"
CG15SB120	15" x 120"
CG18SB36	18" x 36"
CG18SB48	18" x 48"
CG18SB60	18" x 60"
CG18SB72	18" x 72"
CG18SB84	18" x 84"
CG18SB96	18" x 96"
CG18SB108	18" x 108"
CG18SB120	18" x 120"
CG24SB48	24" x 48"
CG24SB60	24" x 60"
CG24SB72	24" x 72"
CG24SB84	24" x 84"
CG24SB96	24" x 96"
CG24SB108	24" x 108"
CG24SB120	24" x 120"
CG30SB60	30" x 60"
CG30SB72	30" x 72"
CG30SB84	30" x 84"
CG30SB96	30" x 96"
CG30SB108	30" x 108"
CG30SB120	30" x 120"
CG36SB72	36" x 72"
CG36SB84	36" x 84"
CG36SB96	36" x 96"
CG36SB108	36" x 108"
CG36SB120	36" x 120"

FLAT BACK FRAME

Standard Sizes

Gate Size	Gate Length
8", 10", 12"	24", 36", 48", 60", 72", 84", 96", 108", 120"
15", 18"	36", 48", 60", 72", 84", 96", 108", 120"
24"	48", 60", 72", 84", 96", 108", 120"
30"	60", 72", 84", 96", 108", 120"
36"	72", 84", 96", 108", 120"

SPIGOT BACK FRAME

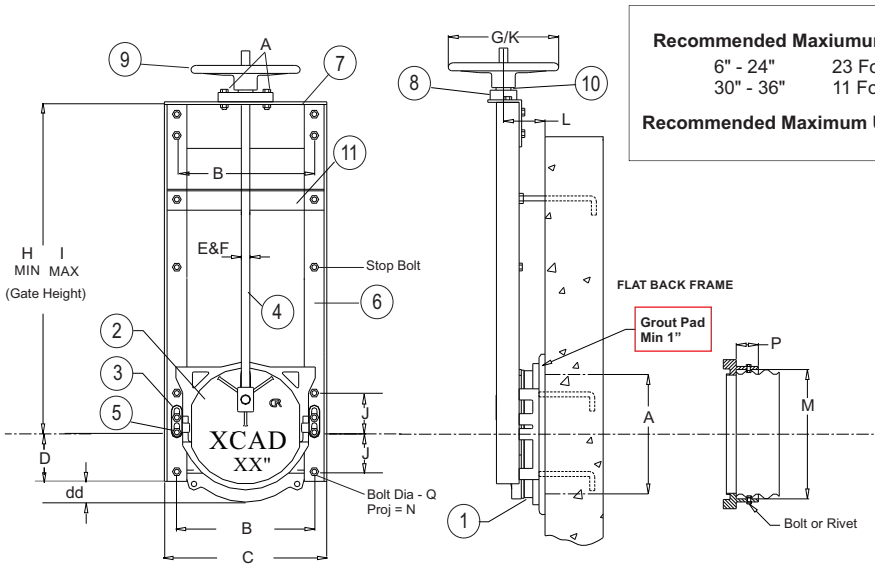
Standard Sizes

Gate Size	Gate Length
8", 10", 12"	24", 36", 48", 60", 72", 84", 96", 108", 120"
15", 18"	36", 48", 60", 72", 84", 96", 108", 120"
24"	48", 60", 72", 84", 96", 108", 120"
30"	60", 72", 84", 96", 108", 120"
36"	72", 84", 96", 108", 120"

Additional Charge For Non-Standard Gate Lengths or Gates Over 120" in length
 All prices are subject to change without notice



X-GATE™ LOW HEAD CANAL GATES



Recommended Maximum Seating Heads
 6" - 24" 23 Foot Head
 30" - 36" 11 Foot Head

Recommended Maximum Unseating Head - 0

Parts List & Standard Features			
No.	Description	Qty.	Material
1	Frame	1	Cast Iron
2	Cover	1	Ductile Iron
3	Wedge (Rt. & Lft)	1 ea	Cast Iron
4	Stem	1	Stainless Steel
5	Wedge Bolts	4	Zinc Plated
6	Guide Rail	2	Galv. Structural Steel
7	Head Rail	1	Galv. Structural Steel
8	Lift Collar	1	Cast Iron
9	Handwheel	1	Cast Iron
10	Lift Nut	1	Bronze
11	Stem Support	1-2	Galv. Structural Steel

Cover: Cast Iron ASTM A 126 class B
Frame: Ductile Iron ASTM 65-45-120
Nut: Bronze ASTM B-584
Stem: Stainless Steel
Fasteners/Hardware: Zinc Plated
Railing: Galvanized

Flat Back
for Headwall and Flange Mounting

Spigot Back
for Mounting to Corrugated Pipe

Dimensions For X-GATE™ Low-Head Canal Gates

(All Measurements in Inches)

A	B	C	D	dd	E XCAD	F Fresno	G XCAD	H Min	I Max	J	K Fresno	L	M	N	P	Q
8"	10"	13"	4"	7/8"	7/8" (.875)	7/8" (.875)	10"	25 1/2"	121 1/2"	3"	10"	2.5"	9 1/8" (9.125)	3.5"	2.25"	1/2" x 12"
10"	12"	14 7/8" (14.875)	4 1/2"	1 1/2"	7/8" (.875)	7/8" (.875)	10"	26 1/4"	122 1/4"	3.5"	10"	2.5"	11 1/4" (11.25)	3.5"	2.25"	1/2" x 12"
12"	14"	16 7/8" (16.875)	5"	2"	7/8" (.875)	7/8" (.875)	10"	26 3/4"	122 3/4"	4"	10"	3"	13 1/8" (13.125)	4"	2.25"	1/2" x 12"
15"	17"	18 7/8" (18.875)	6"	2 1/2"	7/8" (.875)	7/8" (.875)	10"	39 1/2"	123 1/2"	5"	10"	3.5"	16"	4"	2.25"	1/2" x 12"
18"	21"	22 7/8" (22.875)	7"	3 1/2"	1"	1 1/8" (1.125)	12"	40 1/4"	124 1/4"	6"	14"	4.25"	19 1/8" (19.125)	4.5"	2.25"	5/8" x 12"
24"	27 1/4" (27.25)	29 1/8" (29.125)	9"	4 3/4"	1"	1 1/8" (1.125)	12"	53 1/2"	125 1/2"	8"	14"	4.125"	25"	4.5"	2.25"	5/8" x 12"
30"	33 3/4" (33.75)	36 1/8" (36.125)	11"	6 3/4"	1 1/8" (1.125)	1 1/8" (1.125)	15"	67 1/2"	127 1/2"	10"	14"	4.5"	31 1/2" (31.5)	6"	2.25"	3/4" x 12"
36"	39 3/4" (39.75)	42 1/8" (42.125)	13"	7 1/2"	1 1/8" (1.125)	1 1/8" (1.125)	15"	80 1/4"	128 1/4"	12"	14"	5.375"	37"	6"	2.25"	3/4" x 12"

Gate Size	Gate Heights															
	Min.														Max.	
8	24"	36"	48"	60"	72"	78"	84"	90"	96"	102"	108"	114"	120"			
10	24"	36"	48"	60"	72"	78"	84"	90"	96"	102"	108"	114"	120"			
12	24"	36"	48"	60"	72"	78"	84"	90"	96"	102"	108"	114"	120"			
15	36"	48"	60"	72"	78"	84"	90"	96"	102"	108"	114"	120"				
18	36"	48"	60"	72"	78"	84"	90"	96"	102"	108"	114"	120"				
24	48"	60"	72"	78"	84"	90"	96"	102"	108"	114"	120"					
30	60"	72"	78"	84"	90"	96"	102"	108"	114"	120"						
36	72"	78"	84"	90"	96"	102"	108"	114"	120"							

X-GATE™ Low Head Canal Gates are designed to XCAD USA's highest specifications. Frames, covers and wedges are not interchangeable with other brands.



X-GATE™ LOW HEAD CANAL GATE PARTS

WEDGE SET (2pcs)

- X-Type
 X8-15WEDGE 8"-15" gate
 X18-24WEDGE 18"-24" gate
 X30-36WEDGE 30"-36" gate

Fresno-Type

- F6-15WEDGE 6"-15" gate
 F18-36WEDGE 18"-36" gate

LIFT NUT

- X-Type Left-Hand Thread
 XL78BNUT Fits 7/8" Stem
 XL1BNUT Fits 1" Stem
 XL118BNUT Fits 1 1/8" Stem

X-Type Right-Hand Thread

- XR78BNUT Fits 7/8" Stem
 XR1BNUT Fits 1" Stem
 XR118BNUT Fits 1 1/8" Stem

Fresno-Type

- FL78NUT Fits 7/8" Stem
 FL118NUT Fits 1 1/8" Stem

PLASTIC RING GASKET

- CGGSKT8-15 Fits 7/8" Stem
 CGGSKT18-24 Fits 1" Stem
 CGGSKT30-36 Fits 1 1/8" Stem

WELD ON COUPLER

- XL78WOC Fits 7/8" Stem
 XL1WOC Fits 1" Stem
 XL118WOC Fits 1 1/8" Stem

Replacement Parts

Wedges, Lift Collars, Bronze Lift Nuts, Stainless Steel Stems and Hand Wheels
 Available for X-GATE™ and Fresno® Brand Gates

STEEL EXTENSION COUPLER

- CGEC8-15 7/8" for 8"-15" gate
 CGEC18-24 1" for 18"-24" gate
 CGEC30-36 1 1/8" for 30"-36" gate

HAND WHEELS

- X-Type
 X8-15WHL 8"-15" gate
 X18-24WHL 18"-24" gate
 X30-36WHL 30"-36" gate

- Fresno-Type
 F10WHL 6"-15" gate
 F14WHL 15"-36" gate

RING / LIFT COLLAR

- X-Type
 X8-15RING Fits 7/8" Stem
 X18-24RING Fits 1" Stem
 X30-36RING Fits 1 1/8" Stem

- Fresno-Type
 F-RING Fits 7/8" and 1 1/8" Stem

STAINLESS STEEL STEM

Stems Sold per Foot

- X-Type Left-Hand Thread Stem
 XL78ST 7/8"
 XL1ST 1"
 XL118ST 1 1/8"

X-Type Right-Hand Thread Stem

- XR78ST 7/8"
 XR1ST 1"
 XR118ST 1 1/8"

Fresno-Type Left-Hand Thread Stem

- FL78ST 7/8"
 FL118ST 1 1/8"



Contact **XCAD USA** for Additional Replacement Part Pricing and Availability

STANDARD RAILING AND STEM LENGTHS

All Stems Are Stainless Steel Unless Otherwise Specified

Gate Size

(Rail Color Code)		8" (Red)		10" (Blue)		12" (Green)		15" (Yellow)		18" (Black)		24" (Brown)		30" (White)		36" (Pink)	
H,I Gate Height (In)	H,I Gate Height (Ft)	H,I +D Total Rail Length (In)	Stem Length	H,I +D Total Rail Length (In)	Stem Length	H,I +D Total Rail Length (In)	Stem Length	H,I +D Total Rail Length (In)	Stem Length	H,I +D Total Rail Length (In)	Stem Length	H,I +D Total Rail Length (In)	Stem Length	H,I +D Total Rail Length (In)	Stem Length	H,I +D Total Rail Length (In)	Stem Length
	"D" =	(4")		(4 1/2")		(5")		(6")		(7")		(9")		(11")		(13")	
	"dd" =	(7/8")		(1 1/2")		(2")		(2 1/2")		(3 1/2")		(4 3/4")		(6 3/4")		(7 1/2")	
24"	2'	28 7/8"	30"	30"	30"	31"	30"										
36"	3'	40 7/8"	42"	42"	42"	43"	42"	44 1/2"	42"	46 1/2"	42"						
48"	4'	52 7/8"	54"	54"	54"	55"	54"	56 1/2"	54"	58 1/2"	54"	61 3/4"	54"				
60"	5'	64 7/8"	66"	66"	66"	67"	66"	68 1/2"	66"	70 1/2"	66"	73 3/4"	66"	77 3/4"	66"		
72"	6'	76 7/8"	78"	78"	78"	79"	78"	80 1/2"	78"	82 1/2"	78"	85 3/4"	78"	89 3/4"	78"	92 1/2"	78"
84"	7'	88 7/8"	90"	90"	90"	91"	90"	92 1/2"	90"	94 1/2"	90"	97 3/4"	90"	101 3/4"	90"	104 1/2"	90"
96"	8'	100 7/8"	102"	102"	102"	103"	102"	104 1/2"	102"	106 1/2"	102"	109 3/4"	102"	113 3/4"	102"	116 1/2"	102"
108"	9'	112 7/8"	114"	114"	114"	115"	114"	116 1/2"	114"	118 1/2"	114"	121 3/4"	114"	125 3/4"	114"	128 1/2"	114"
120"	10'	124 7/8"	126"	126"	126"	127"	126"	128 1/2"	126"	130 1/2"	126"	133 3/4"	126"	137 3/4"	126"	140 1/2"	126"

Refer to Drawing on Pg 70