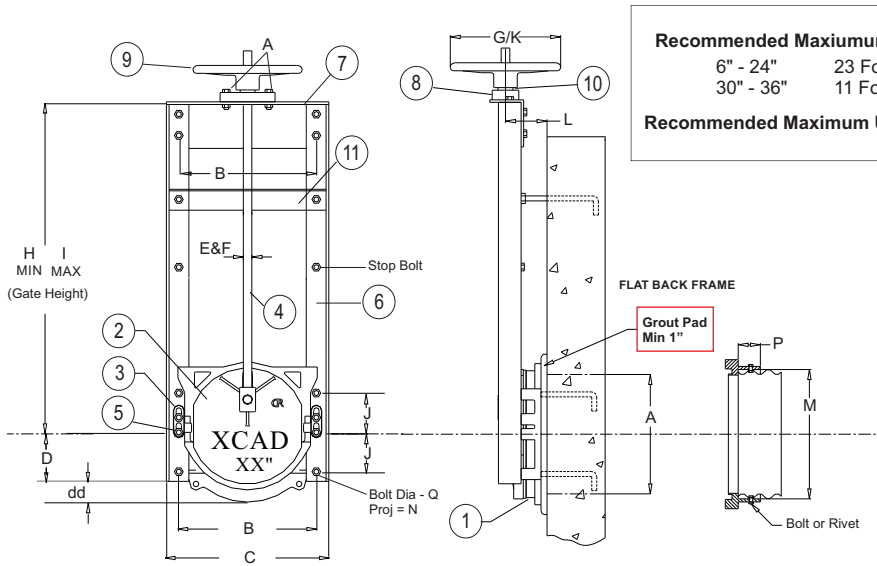




# X-GATE™ LOW HEAD CANAL GATES



**Recommended Maximum Seating Heads**  
 6" - 24"      23 Foot Head  
 30" - 36"      11 Foot Head

**Recommended Maximum Unseating Head - 0**

Parts List & Standard Features			
No.	Description	Qty.	Material
1	Frame	1	Cast Iron
2	Cover	1	Ductile Iron
3	Wedge (Rt. & Lft)	1 ea	Cast Iron
4	Stem	1	Stainless Steel
5	Wedge Bolts	4	Zinc Plated
6	Guide Rail	2	Galv. Structural Steel
7	Head Rail	1	Galv. Structural Steel
8	Lift Collar	1	Cast Iron
9	Handwheel	1	Cast Iron
10	Lift Nut	1	Bronze
11	Stem Support	1-2	Galv. Structural Steel

**Cover:** Cast Iron ASTM A 126 class B  
**Frame:** Ductile Iron ASTM 65-45-120  
**Nut:** Bronze ASTM B-584  
**Stem:** Stainless Steel  
**Fasteners/Hardware:** Zinc Plated  
**Railing:** Galvanized

**Flat Back**  
for Headwall and Flange Mounting

**Spigot Back**  
for Mounting to Corrugated Pipe

## Dimensions For X-GATE™ Low-Head Canal Gates

(All Measurements in Inches)

A	B	C	D	dd	E XCAD	F Fresno	G XCAD	H Min	I Max	J	K Fresno	L	M	N	P	Q
8"	10"	13"	4"	7/8"	7/8" (.875)	7/8" (.875)	10"	25 1/2"	121 1/2"	3"	10"	2.5"	9 1/8" (9.125)	3.5"	2.25"	1/2" x 12"
10"	12"	14 7/8" (14.875)	4 1/2"	1 1/2"	7/8" (.875)	7/8" (.875)	10"	26 1/4"	122 1/4"	3.5"	10"	2.5"	11 1/4" (11.25)	3.5"	2.25"	1/2" x 12"
12"	14"	16 7/8" (16.875)	5"	2"	7/8" (.875)	7/8" (.875)	10"	26 3/4"	122 3/4"	4"	10"	3"	13 1/8" (13.125)	4"	2.25"	1/2" x 12"
15"	17"	18 7/8" (18.875)	6"	2 1/2"	7/8" (.875)	7/8" (.875)	10"	39 1/2"	123 1/2"	5"	10"	3.5"	16"	4"	2.25"	1/2" x 12"
18"	21"	22 7/8" (22.875)	7"	3 1/2"	1"	1 1/8" (1.125)	12"	40 1/4"	124 1/4"	6"	14"	4.25"	19 1/8" (19.125)	4.5"	2.25"	5/8" x 12"
24"	27 1/4" (27.25)	29 1/8" (29.125)	9"	4 3/4"	1"	1 1/8" (1.125)	12"	53 1/2"	125 1/2"	8"	14"	4.125"	25"	4.5"	2.25"	5/8" x 12"
30"	33 3/4" (33.75)	36 1/8" (36.125)	11"	6 3/4"	1 1/8" (1.125)	1 1/8" (1.125)	15"	67 1/2"	127 1/2"	10"	14"	4.5"	31 1/2" (31.5)	6"	2.25"	3/4" x 12"
36"	39 3/4" (39.75)	42 1/8" (42.125)	13"	7 1/2"	1 1/8" (1.125)	1 1/8" (1.125)	15"	80 1/4"	128 1/4"	12"	14"	5.375"	37"	6"	2.25"	3/4" x 12"

Gate Size	Gate Heights															
	Min.															Max.
8	24"	36"	48"	60"	72"	78"	84"	90"	96"	102"	108"	114"	120"			
10	24"	36"	48"	60"	72"	78"	84"	90"	96"	102"	108"	114"	120"			
12	24"	36"	48"	60"	72"	78"	84"	90"	96"	102"	108"	114"	120"			
15	36"	48"	60"	72"	78"	84"	90"	96"	102"	108"	114"	120"				
18	36"	48"	60"	72"	78"	84"	90"	96"	102"	108"	114"	120"				
24	48"	60"	72"	78"	84"	90"	96"	102"	108"	114"	120"					
30	60"	72"	78"	84"	90"	96"	102"	108"	114"	120"						
36	72"	78"	84"	90"	96"	102"	108"	114"	120"							

X-GATE™ Low Head Canal Gates are designed to XCAD USA's highest specifications. Frames, covers and wedges are not interchangeable with other brands.